



## Plant sap sampling guide

### *Lettuce*



#### **Contact details**

NovaCropControl  
Gasthuisstraat 20  
5061 PB Oisterwijk  
The Netherlands  
[www.novacropcontrol.nl](http://www.novacropcontrol.nl)



## ***Collecting and submitting samples***

### **Location**

Take the following steps into consideration when collecting leaf samples:

- Avoid the outer rows of the greenhouse or field and the first and last 10 yards of a row.
- Sample leaves with an average leaf quality.
- Sample abnormal plants with (deficiency symptoms) separately. If a deficiency might be present in the young or old leaves of the total crop, sample these leaves separately as a young or old leaf sample.
- Keep in mind the sunny and shady side of the plant. Always consistently sample the same side.

### **Time of sampling**

It is strongly recommended to take the samples before 9:00 AM. The plant will then have enough leaf-tension with proper moisture conditions.

### **Moisture on the sample**

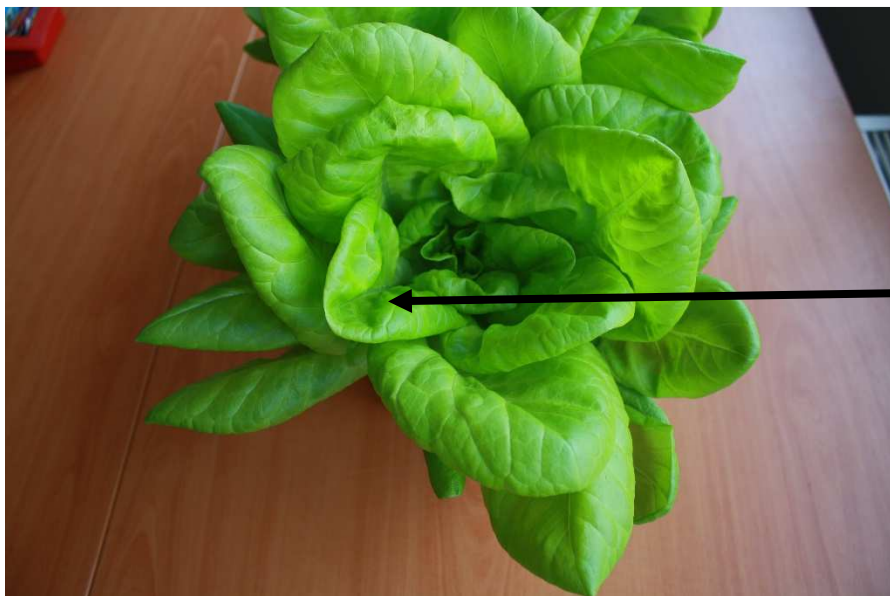
When the leaves are wet on the outside due to dew or rain, they can be dried with a tissue. Leaves have to be dry from the outside to be analyzed, water will have an influence on the results.

### **Part of the plant**

For sampling, pick the **youngest, fully developed, representative leaf** counting from the centre of the plant to the outside. Also pick the **oldest, vital, representative leaf** at the base of the plant (Pic. 1+2).

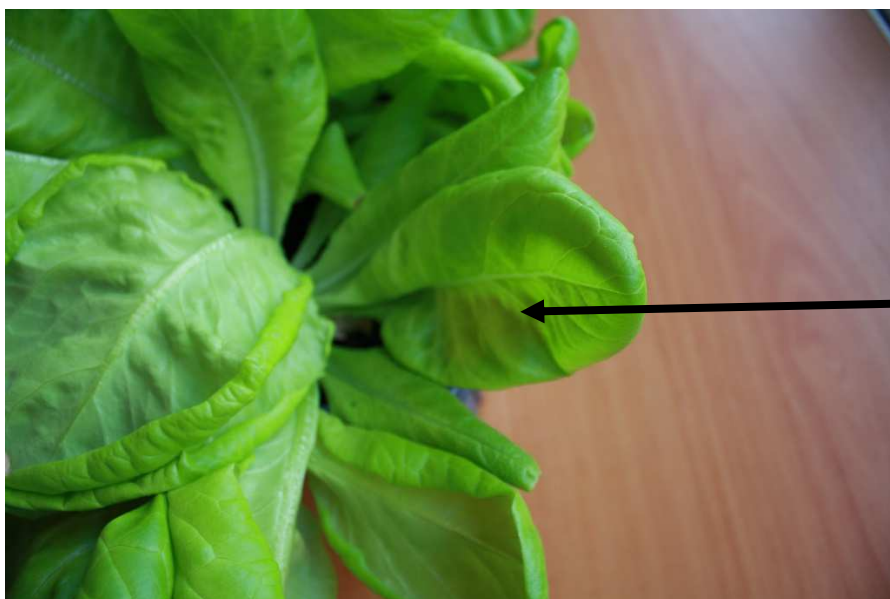
Remove the petioles from the leaf. Petioles can have a significant effect on the analysis of the leaf sample. For the analysis you will have a separate young leaf sample and an old leaf sample.





Young,  
fully  
developed  
inner leaf

Pic 1



Old, still  
vital leaf at  
the base of  
the plant

Pic 2





### Sample size

For an average, representative sample about 20 leaves are needed. Sample size can vary depending on leaf type (size and thickness). If you have questions about sample size, please contact us.

### Stacking the leaves

To ensure proper processing of the samples, it is important to prepare the samples properly. Stack the leaves as shown below (tomato leaf as an example).



### Packing the leaves

Put the leaf sample in the plastic zip-bag. Push out the air inside and close the bag. Put a pre-printed label on the sample bag and fill in the needed information. Make sure the barcode is visible (see pictures below).





### Packing the samples

Put all samples in the envelope or box and make sure it fits in a mailbox (max 1.38 inches high).



### Sending the samples

The sample zip-lock bags with barcode can be sent in the envelope. If you want to send more than one sample, send together in 1 box. Be sure to put sufficient postage on the envelope or package. Always check the weight. Be sure that envelopes are sealed well. You can put extra tape over the closure to avoid opening during transportation.

We recommend to sample crops on Friday and send the same day by FedEx, then NovaCropControl is receiving your samples in the beginning of the next week. Please put \$1.00 as the shipment value on the sample package.

Please send samples to the address below:

**NovaCropControl**  
Gasthuisstraat 20  
5061 PB Oisterwijk  
The Netherlands

