



Plant sap sampling guide

Strawberry



Contact details

NovaCropControl
Nijverheidsweg 30
5061 KL Oisterwijk
The Netherlands
info@novacropcontrol.nl
www.novacropcontrol.nl



Collecting and submitting samples

Location

Take the following steps into consideration when collecting leaf samples:

- Avoid the outer rows of the field and the first and last 10 yards of a row.
- Sample leaves of average leaf quality.
- Sample abnormal plants (with deficiency symptoms) separately. If a deficiency might be present in the young or old leaves of the total crop, sample these leaves separately as a young or old leaf sample.
- Keep in mind the sunny and shady side of the plant. Always consistently sample the same side.

Time of sampling

It is strongly recommended to take the samples before 9:00 AM. The plant will then have enough leaf-tension with proper moisture conditions.

Begin with sampling the leaves two weeks after planting, then every week. The same applies to water samples, irrigation, slab and drain water when you grow the strawberry's in a greenhouse. Until the cultivation is finished.

Plant parts

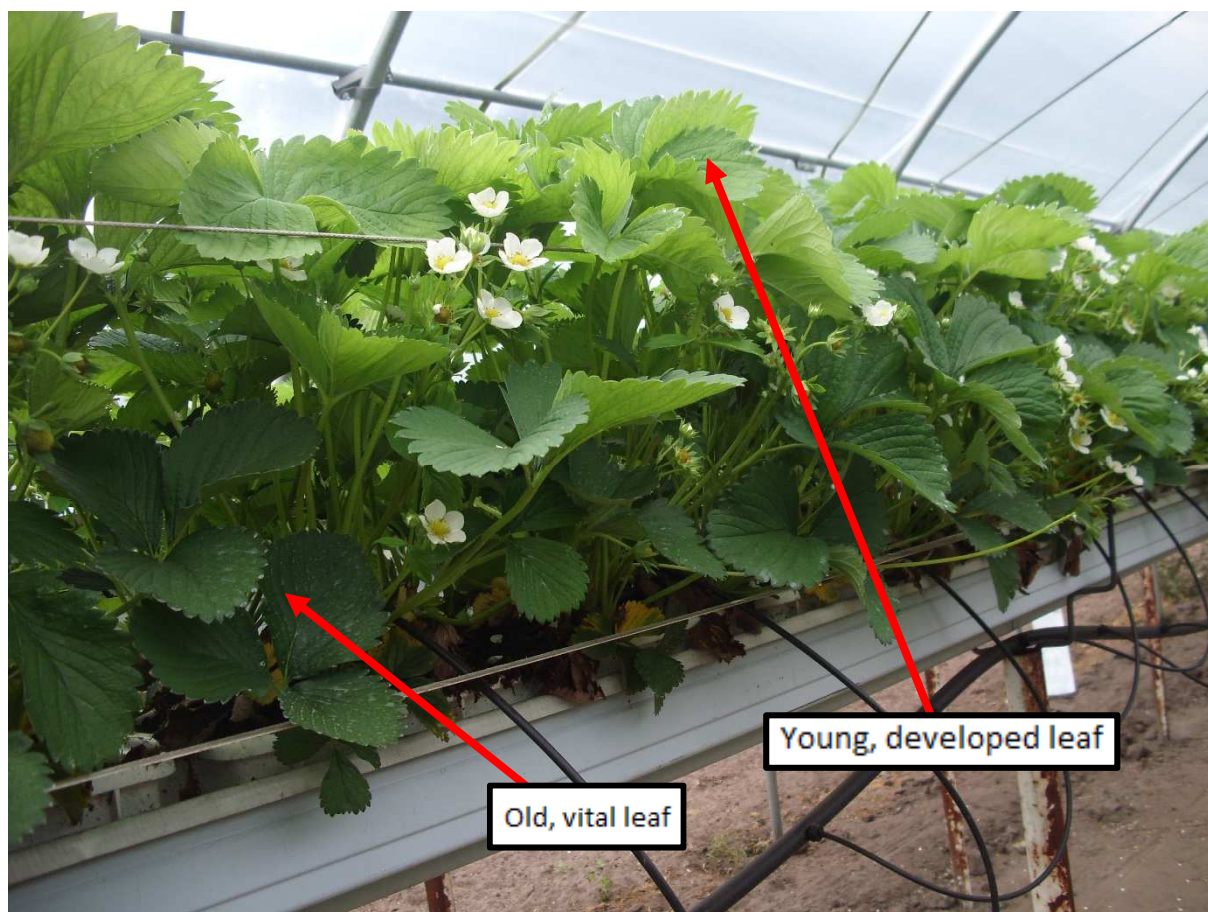
For a young leaf sample, take the **youngest, fully developed leaves**. For an old leaf sample take the **oldest, but still vital leaves**. From these clustered leaves, only the middle (top) leaf is needed for each leaf sample (see pictures 1,2 and 3). Stack the leaves for each sample and remove the petioles, as they will not give a good indication and influence the sample.

It is not allowed to send in samples that have a fungal, bacterial or virus infection. The leaves must also be free from insects.



Sampling

Pic. 1



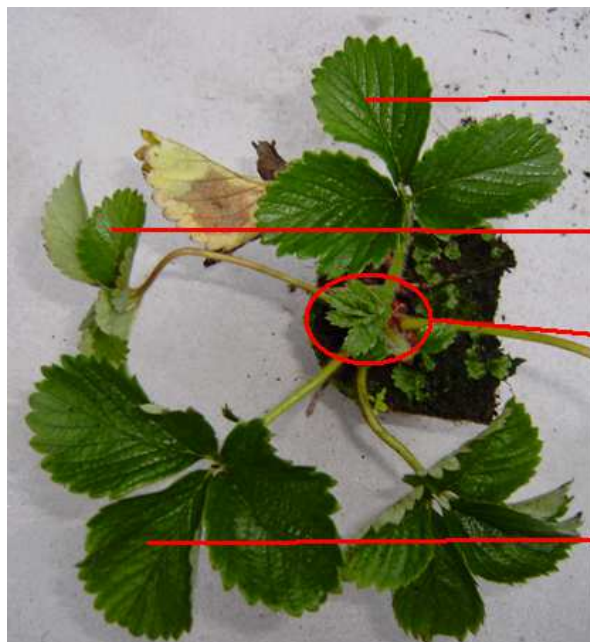
Sample size

For an average, representative sample about 50 leaves are needed. Of course sample size can vary, depending on leaf type (size and thickness). If you are unsure about the sample size, please feel free to contact us.



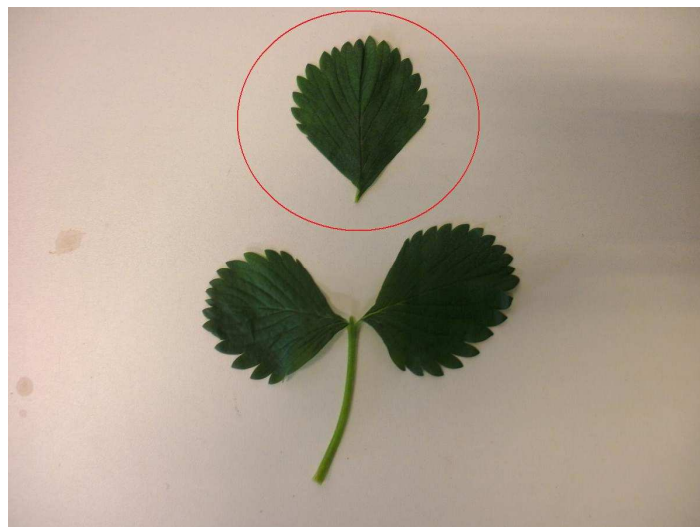


Pic. 2



- 1: Young, developed leaf (sample)
- 2: Too old, not vital leaf
- 3: Too young, undeveloped leaf
- 4: Old, vital leaf (sample)

Pic. 3





Sending the samples

The leaf samples in zip-lock bags with barcode can be send in a box. Make sure you put all samples in one package so it will all arrive at the same time. In case you want to send one or two samples, you can put them in an envelope. Put sufficient postage on the envelope or package. Always check the weight. Please take care that envelopes and bags are sealed well. You can put an extra tape over the closure to avoid opening during transit.

Do you ship samples from outside Europe? To avoid clearance delay at the customs and high costs please consult our shipment guide for sending samples to Europe. You can find this guide at our website.

Please send samples to the address below:

NovaCropControl

Street: Nijverheidsweg 30

Zip-code: 5061 KL

Town: Oisterwijk

Country: The Netherlands

