



## Plant sap sampling guide

### *Lettuce*



#### **Contact details**

NovaCropControl  
Nijverheidsweg 30  
5061 KL Oisterwijk  
The Netherlands  
info@novacropcontrol.nl  
[www.novacropcontrol.nl](http://www.novacropcontrol.nl)



## ***Sampling and sending samples***

### **Location**

Take the following steps into consideration when collecting leaf samples:

- Avoid the outer rows of the field and the first and last 10 yards of a row.
- Sample leaves of average leaf quality.
- Sample abnormal plants (with deficiency symptoms) separately. If a deficiency might be present in the young or old leaves of the total crop, sample these leaves separately as a young or old leaf sample.
- Keep in mind the sunny and shady side of the plant. Always consistently sample the same side.

### **Time of sampling**

It is strongly recommended to take the samples before 9:00 AM. The plant will then have enough leaf-tension with proper moisture conditions.

Begin with analyzing three weeks after planting, every two or three weeks until just before harvest.

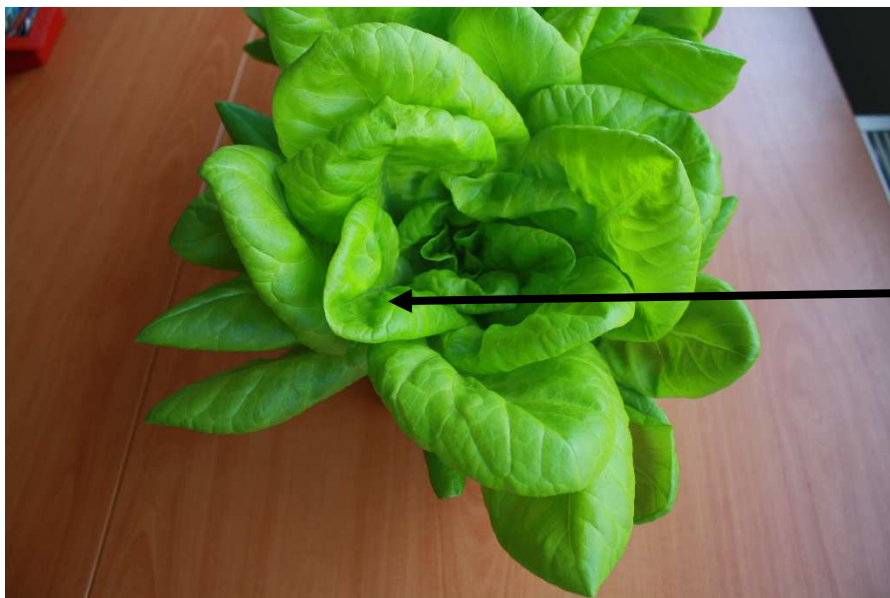
### **Part of the plant**

For sampling, pick the **youngest, fully developed, representative leaf** counting from the centre of the plant to the outside. Also pick the **oldest, vital, representative leaf** at the base of the plant (Pic. 1+2).

Remove the petioles from the leaf. Petioles can have a significant effect on the analysis of the leaf sample. For the analysis you will have a separate young leaf sample and an old leaf sample.

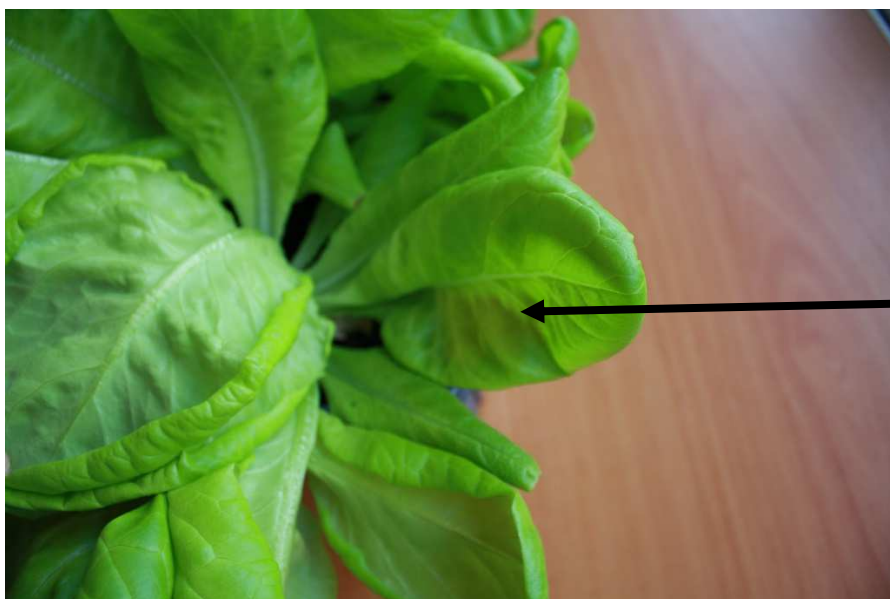
It is not allowed to send in samples that have a fungal, bacterial or virus infection. The leaves must also be free from insects.





Young,  
fully  
developed  
inner leaf

Pic 1



Old, still  
vital leaf at  
the base of  
the plant

Pic 2







### Sample size

For an average, representative sample about 20 leaves are needed, at least 150 grams. Sample size can vary depending on leaf type (size and thickness). If you have questions about sample size, please contact us.

### Packing the leaf samples

When leaves are wet on the outside due to dew or rain, they can be dried with a tissue. Leaves have to be dry from the outside to be analyzed because water will have an influence on the results. Moreover, the leaves will spoil faster if there is water in the sample bag.

Please pack the young and old leaf samples separately, these will be two different samples. To assure fluent processing please stack the leaves, fold the leaves if needed, and put them in a plastic zip-lock bag carefully. Make sure all air is out, so any leaf evaporation is excluded.



Fill in the labels correctly and place them on the bags (see pictures below). We prefer pre-printed labels because it saves us a lot of administration time. It has also advantages for you:

- When using Bemesting-Online program you need the same location names and crop names to make comparisons (graphs), pre-printed labels make this a lot easier;
- If our employees must read what is on the label, the chance of reading errors is very high, this is not the case with preprinted labels;
- You no longer must write the location and crop name on the label on the spot.

Let us know if you need help with this.





### **Sending the samples**

The leaf samples in zip-lock bags with barcode can be send in a box. Make sure you put all samples in one package so it will all arrive at the same time. In case you want to send one or two samples, you can put them in an envelope. Put sufficient postage on the envelope or package. Always check the weight. Please take care that envelopes and bags are sealed well. You can put an extra tape over the closure to avoid opening during transit.

Do you ship samples from outside Europe? To avoid clearance delay at the customs and high costs please consult our shipment guide for sending samples to Europe. You can find this guide at our website.

Please send samples to the address below:

### **NovaCropControl**

Street: Nijverheidsweg 30

Zip-code: 5061 KL

Town: Oisterwijk

Country: The Netherlands

