



## Manual plant sap sampling

# *Potato*



### Contact details

NovaCropControl  
Gasthuisstraat 20  
5061 PB Oisterwijk  
The Netherlands

[www.novacropcontrol.nl](http://www.novacropcontrol.nl)

Joan Timmermans  
Mobiel: +316-83220623  
E-mail: [j.timmermans@novacropcontrol.nl](mailto:j.timmermans@novacropcontrol.nl)

Koen van Kempen  
Mobiel: +316-57314128  
E-mail: [k.vankempen@novacropcontrol.nl](mailto:k.vankempen@novacropcontrol.nl)



## ***Sampling and sending samples***

### **Location**

Take the following steps into account when collecting leaf samples:

- Avoid the outer rows of the field. Also avoid the first and last 10 meters of a row.
- Sample leaves with an average leaf quality. Sample abnormal plants with e.g. deficiency symptoms separately. Might a deficiency be present in the young or old leaves of the total crop, then sample these leaves regularly as a young or old leaf sample.
- Take into account the sunny and shady side of the plant. Always consistently sample the same side.

### **Time of sampling**

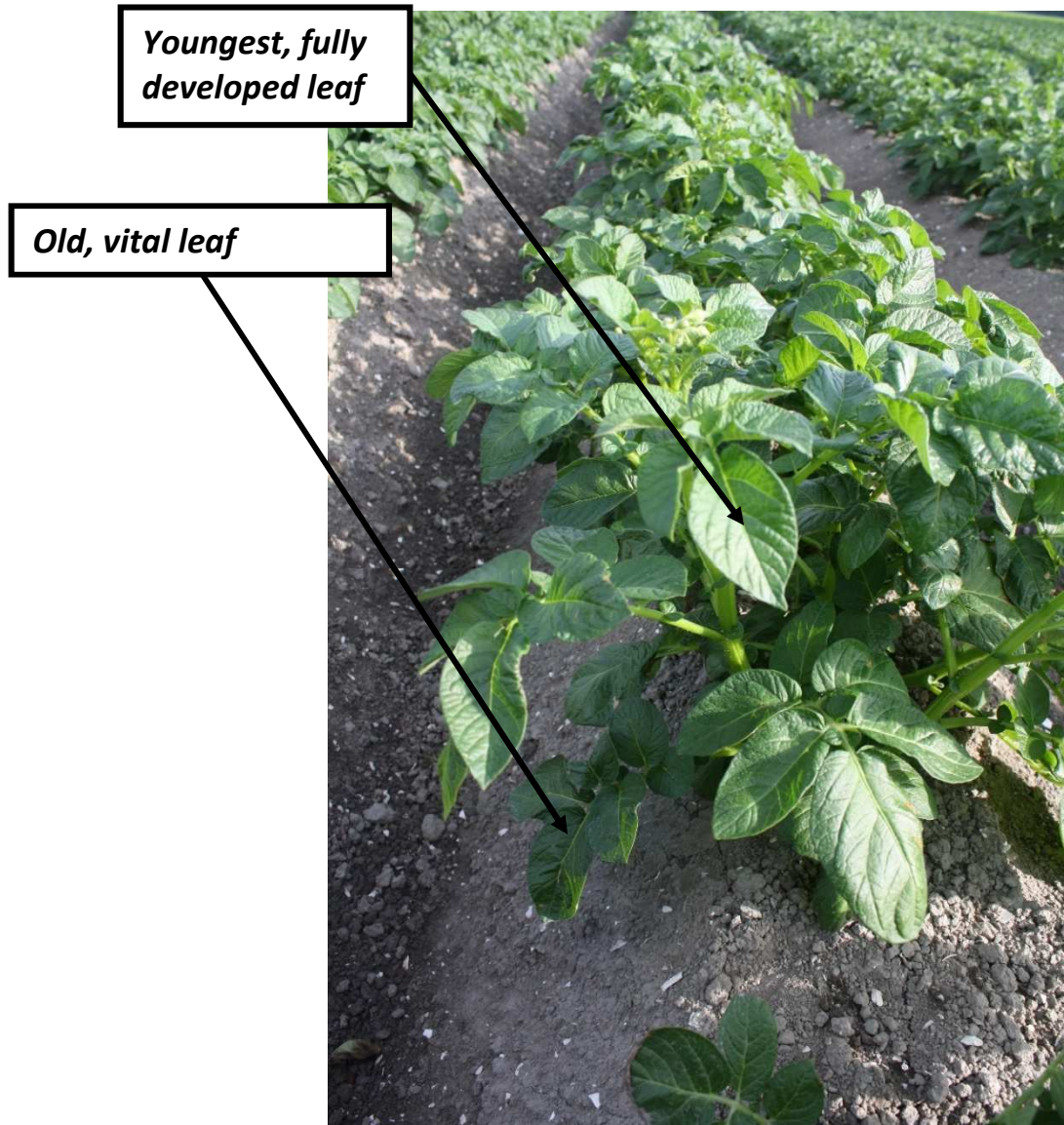
It is strongly recommended to take the samples before 9:00 AM. The plant will then have enough leaf-tension with proper moisture conditions.

### **Plant parts**

#### **Leaf samples**

For sampling, take the **youngest, fully developed leaf** (see pic. 1). Also take the **oldest, vital leaf**. Please remove the petioles from the leaf (see pic. 2). These petioles can have a significant effect on the analysis of the leaf sample.





Pic. 1



Pic. 2







### Sample size

For an average, representative sample about 30 leaves are needed. Of course sample size can vary, depending on leaf type (size and thickness). Might you doubt about the sample size, please feel free to contact us.

For a tuber sample we need 10 tubers of equal size.

### Packing the leaf samples

Please pack the young and old leaf samples separately, these will be two different samples. When leaves are humid because of rain, please dry them with a tissue before you pack them.

To assure fluent processing please stack the leaves, fold the leaves if needed and put them in a plastic zip-lock bag carefully. Make sure all air is out, so any leaf evaporation is excluded. See pictures below (tomato leaf as an example).



Fill in the labels correctly and place them on the bags (see pictures below). It is possible to order pre-printed labels. Contact us about the possibilities.





### **Sending the samples**

The sample zip-lock bags with barcode can be sent in the envelope, in case you want to send more than one sample, please send them together in 1 box, so they will arrive together. Then put sufficient postage on the envelope or package. Always check the weight. Please take care that envelopes are sealed well. You can put an extra tape over the closure to avoid opening during transportation.

We recommend to sample crops on Friday and send the same day by DHL or FedEx, then NovaCropControl is receiving your samples in the beginning of the next week. Please put €1.00 as the shipment value on the sample package.

Please send samples to the address below:

**NovaCropControl**  
Gasthuisstraat 20  
5061 PB Oisterwijk  
The Netherlands

